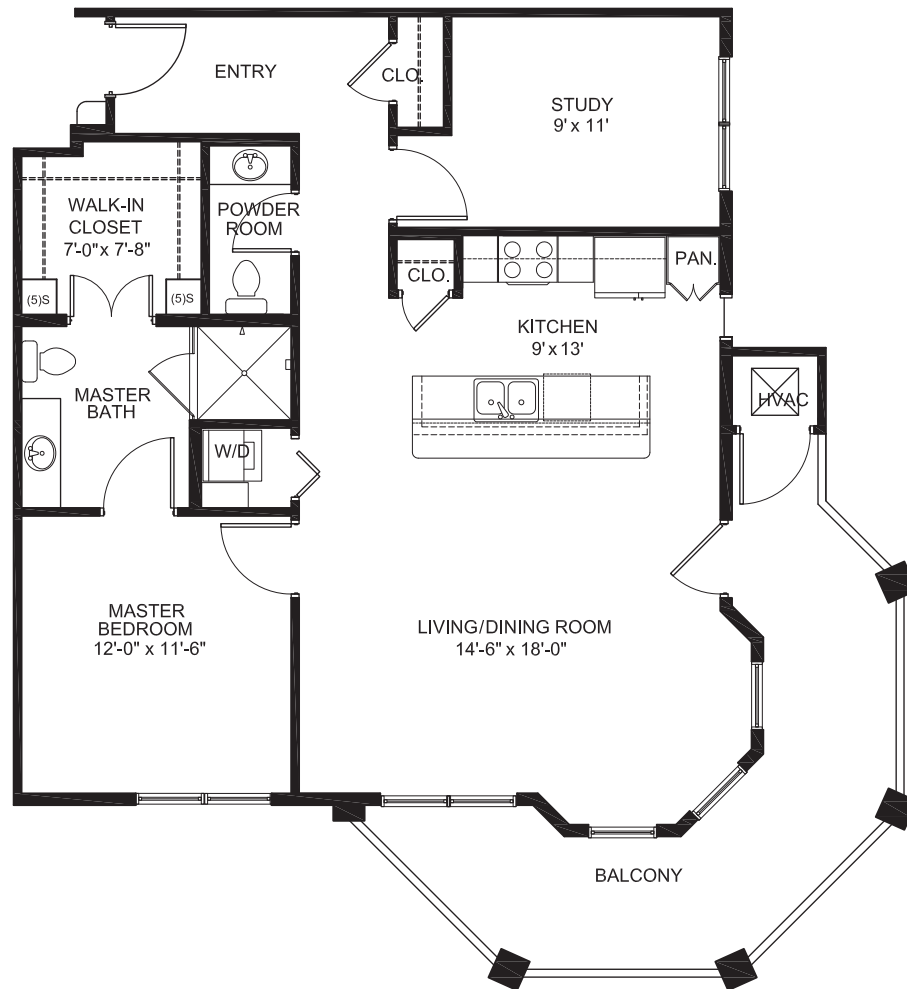


Independent Living AT REDSTONE VILLAGE

Cumberland | 980 Square Feet | 1 Bedroom 1 1/2 Bath w/Study
Includes open floor plan, study, walk-in closet and large wrap-around balcony



12000 Turnmeyer Drive SE | Huntsville, AL 35803 | (256) 881-6717 | www.RedstoneVillage.org

Independent Living | Assisted Living | Memory Support | Skilled Care & Rehabilitation

