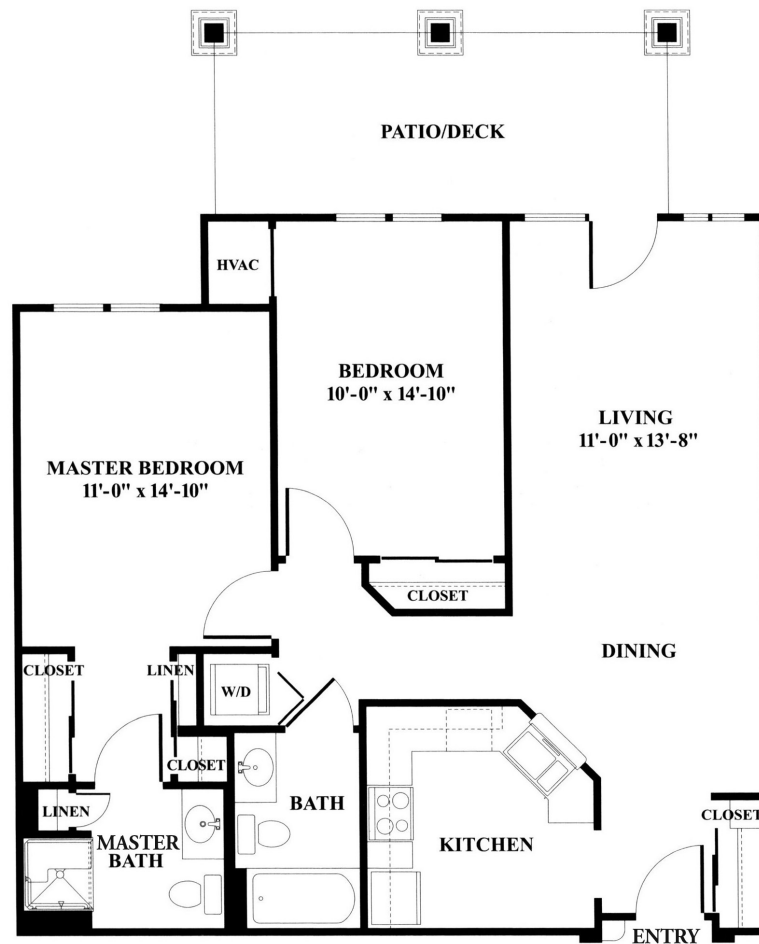


Independent Living AT REDSTONE VILLAGE

Chapman | 973 Square Feet | 2 Bedroom 2 Bath

Includes dining room and patio/balcony



12000 Turnmeyer Drive SE | Huntsville, AL 35803 | (256) 881-6717 | www.RedstoneVillage.org

Independent Living | Assisted Living | Memory Support | Skilled Care & Rehabilitation

