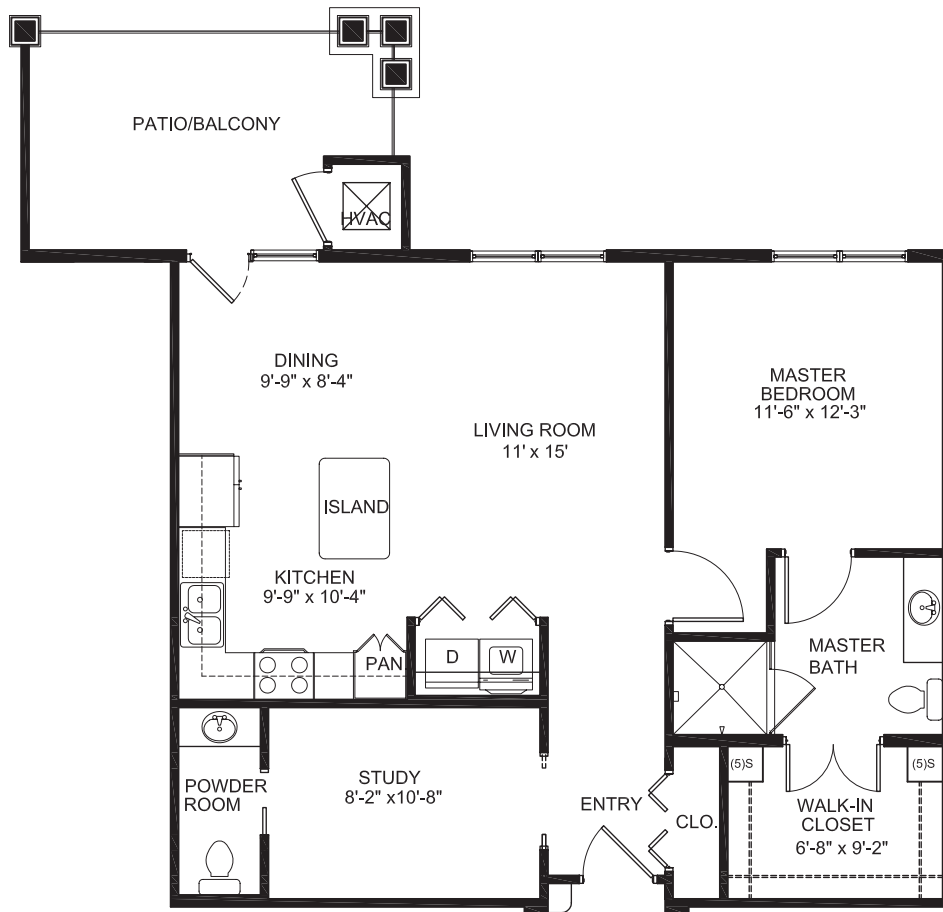


Independent Living AT REDSTONE VILLAGE

Blue Ridge | 880 Square Feet | 1 Bedroom 1 1/2 Bath w/Study

Includes open floor plan, study, walk-in closet and patio/balcony



Other options are available for Blue Ridge.



12000 Turnmeyer Drive SE | Huntsville, AL 35803 | (256) 881-6717 | www.RedstoneVillage.org

Independent Living | Assisted Living | Memory Support | Skilled Care & Rehabilitation

